

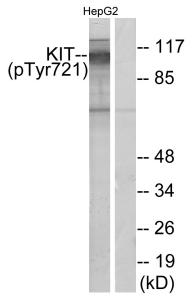
Anti-c-Kit (phospho Tyr721) Antibody (A93872)

Specifications:

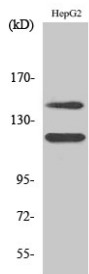
Name:	Anti-c-Kit (phospho Tyr721) Antibody
Description:	Rabbit polyclonal antibody to c-Kit (phospho Tyr721).
Specificity:	This antibody detects endogenous levels of c-Kit only when phosphorylated at Tyr721.
Applications:	WB, ELISA
Recommended Dilutions:	IHC: 1:50-1:100, ELISA: 1:1000
Reactivity:	Human, Mouse, Rat
Immunogen:	Synthetic peptide derived from human c-Kit around the phosphorylation site of Tyr721 (amino acids 688-737).
Host:	Rabbit
Clonality:	Polyclonal
Isotype:	IgG
Conjugate:	Unconjugated
Purification:	Purified from rabbit serum by antigen affinity chromatography using the immunizing phospho peptide.
Molecular Weight:	109kDa
Product Form:	Liquid
Formulation:	Supplied in Phosphate Buffered Saline (without Mg ²⁺ and Ca ²⁺), pH 7.4, with 150mM NaCl, 0.02% Sodium Azide, and 50% Glycerol.
Storage:	Shipped at 4°C. Upon delivery aliquot and store at -20°C. Avoid freeze / thaw cycles.
Disclaimer:	This product is for research use only. It is not intended for diagnostic or therapeutic use.

Anti-c-Kit (phospho Tyr721) Antibody (A93872)

Images:



Western blot analysis of lysates from HepG2 cells treated with EGF 200ng/ml 30' using Anti-c-Kit (phospho Tyr721) Antibody. The right hand lane represents a negative control, where the antibody is blocked by the immunising peptide.



Western blot analysis of various cells using Anti-c-Kit (phospho Tyr721) Antibody.