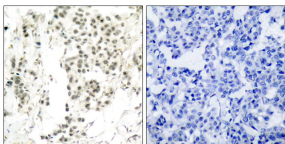


Anti-Chk1 (phospho Ser345) Antibody (A93906)

Specifications:

Name:	Anti-Chk1 (phospho Ser345) Antibody
Description:	Rabbit polyclonal antibody to Chk1 (phospho Ser345).
Specificity:	This antibody detects endogenous levels of Chk1 only when phosphorylated at Ser345.
Applications:	IHC, ELISA
Recommended Dilutions:	IHC: 1:50-1:100, ELISA: 1:10000
Reactivity:	Human, Mouse, Rat
Immunogen:	Synthetic peptide derived from human Chk1 around the phosphorylation site of Ser345 (amino acids 310-359).
Host:	Rabbit
Clonality:	Polyclonal
Isotype:	IgG
Conjugate:	Unconjugated
Purification:	Purified from rabbit serum by antigen affinity chromatography using the immunizing phospho peptide.
Molecular Weight:	54kDa
Product Form:	Liquid
Formulation:	Supplied in Phosphate Buffered Saline (without Mg ²⁺ and Ca ²⁺), pH 7.4, with 150mM NaCl, 0.02% Sodium Azide, and 50% Glycerol.
Storage:	Shipped at 4°C. Upon delivery aliquot and store at -20°C. Avoid freeze / thaw cycles.
Disclaimer:	This product is for research use only. It is not intended for diagnostic or therapeutic use.

Images:



Immunohistochemical analysis of paraffin-embedded human breast carcinoma using Anti-Chk1 (phospho Ser345) Antibody. The right hand panel represents a negative control, where the antibody was pre-incubated with the immunising peptide.