

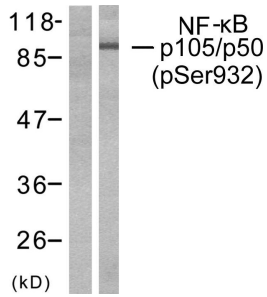
## Anti-NF kappa B p105 / p50 (phospho Ser932) Antibody (A93921)

### Specifications:

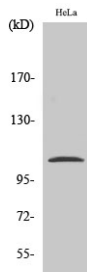
Name:	Anti-NF kappa B p105 / p50 (phospho Ser932) Antibody
Description:	Rabbit polyclonal antibody to NF kappa B p105 / p50 (phospho Ser932).
Specificity:	This antibody detects endogenous levels of NF-kappaB p105/p50 only when phosphorylated at Ser932.
Applications:	WB, ELISA
Recommended Dilutions:	WB: 1:500-1:1000, IHC: 1:50-1:100, IF: 1:100-1:500, ELISA: 1:40000
Reactivity:	Human, Mouse, Rat
Immunogen:	Synthetic peptide derived from human NF-kappaB p105/p50 around the phosphorylation site of Ser932 (amino acids 899-948).
Host:	Rabbit
Clonality:	Polyclonal
Isotype:	IgG
Conjugate:	Unconjugated
Purification:	Purified from rabbit serum by antigen affinity chromatography using the immunizing peptide.
Molecular Weight:	105kDa
Product Form:	Liquid
Formulation:	Supplied in Phosphate Buffered Saline (without Mg <sup>2+</sup> and Ca <sup>2+</sup> ), pH 7.4, with 150mM NaCl, 0.02% Sodium Azide, and 50% Glycerol.
Storage:	Shipped at 4°C. Upon delivery aliquot and store at -20°C. Avoid freeze / thaw cycles.
Disclaimer:	This product is for research use only. It is not intended for diagnostic or therapeutic use.

## Anti-NF kappa B p105 / p50 (phospho Ser932) Antibody (A93921)

### Images:



Western blot analysis of lysates from HeLa cells treated with CA+TNF 20ng/ml 10' using Anti-NF kappa B p105 / p50 (phospho Ser932) Antibody. The left hand lane represents a negative control, where the antibody is blocked by the immunising peptide.



Western blot analysis of various cells using Anti-NF kappa B p105 / p50 (phospho Ser932) Antibody.