

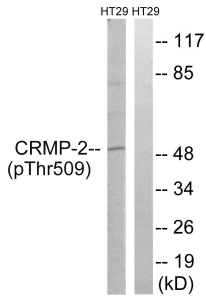
Anti-CRMP-2 (phospho Thr509) Antibody (A93978)

Specifications:

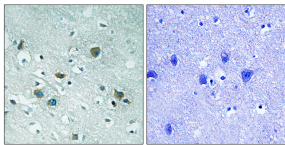
Name:	Anti-CRMP-2 (phospho Thr509) Antibody
Description:	Rabbit polyclonal antibody to CRMP-2 (phospho Thr509).
Specificity:	This antibody detects endogenous levels of CRMP-2 only when phosphorylated at Thr509.
Applications:	WB, IHC, ELISA
Recommended Dilutions:	IHC: 1:50-1:100, ELISA: 1:40000
Reactivity:	Human, Mouse, Rat
Immunogen:	Synthetic peptide derived from human CRMP-2 around the phosphorylation site of Thr509 (amino acids 475-524).
Host:	Rabbit
Clonality:	Polyclonal
Isotype:	IgG
Conjugate:	Unconjugated
Purification:	Purified from rabbit serum by antigen affinity chromatography using the immunizing phospho peptide.
Molecular Weight:	62kDa
Product Form:	Liquid
Formulation:	Supplied in Phosphate Buffered Saline (without Mg ²⁺ and Ca ²⁺), pH 7.4, with 150mM NaCl, 0.02% Sodium Azide, and 50% Glycerol.
Storage:	Shipped at 4°C. Upon delivery aliquot and store at -20°C. Avoid freeze / thaw cycles.
Disclaimer:	This product is for research use only. It is not intended for diagnostic or therapeutic use.

Anti-CRMP-2 (phospho Thr509) Antibody (A93978)

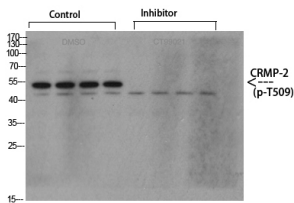
Images:



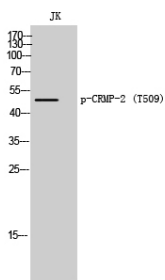
Western blot analysis of lysates from HT29 cells treated with heat shock using Anti-CRMP-2 (phospho Thr509) Antibody. The right hand lane represents a negative control, where the antibody is blocked by the immunising peptide.



Immunohistochemical analysis of paraffin-embedded human brain using Anti-CRMP-2 (phospho Thr509) Antibody. The right hand panel represents a negative control, where the antibody was pre-incubated with the immunising peptide.



Western blot analysis of various cells using Anti-CRMP-2 (phospho Thr509) Antibody at 1:1,000 (4°C overnight). Goat Anti-Rabbit IgG (IRDye 800) was used as a secondary at 1:5,000 (25°C, 1 hour).



Western blot analysis of JK cells using Anti-CRMP-2 (phospho Thr509) Antibody.