

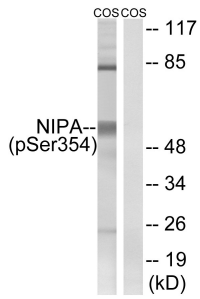
Anti-NIPA (phospho Ser354) Antibody (A94033)

Specifications:

Name:	Anti-NIPA (phospho Ser354) Antibody
Description:	Rabbit polyclonal antibody to NIPA (phospho Ser354).
Specificity:	This antibody detects endogenous levels of NIPA only when phosphorylated at Ser354.
Applications:	WB, ELISA
Recommended Dilutions:	WB: 1:500-1:1000, ELISA: 1:40000
Reactivity:	Human, Mouse, Rat
Immunogen:	Synthetic peptide derived from human NIPA around the phosphorylation site of Ser354 (amino acids 320-369).
Host:	Rabbit
Clonality:	Polyclonal
Isotype:	IgG
Conjugate:	Unconjugated
Purification:	Purified from rabbit serum by antigen affinity chromatography using the immunizing phospho peptide.
Molecular Weight:	55kDa
Product Form:	Liquid
Formulation:	Supplied in Phosphate Buffered Saline (without Mg ²⁺ and Ca ²⁺), pH 7.4, with 150mM NaCl, 0.02% Sodium Azide, and 50% Glycerol.
Storage:	Shipped at 4°C. Upon delivery aliquot and store at -20°C. Avoid freeze / thaw cycles.
Disclaimer:	This product is for research use only. It is not intended for diagnostic or therapeutic use.

Anti-NIPA (phospho Ser354) Antibody (A94033)

Images:



Western blot analysis of lysates from COS7 cells treated with HU 2nM 24h using Anti-NIPA (phospho Ser354) Antibody. The right hand lane represents a negative control, where the antibody is blocked by the immunising peptide.