

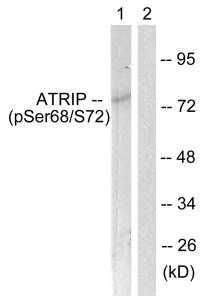
## Anti-ATRIP (phospho Ser68) Antibody (A94090)

### Specifications:

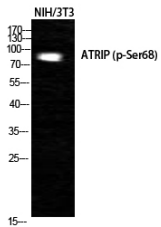
Name:	Anti-ATRIP (phospho Ser68) Antibody
Description:	Rabbit polyclonal antibody to ATRIP (phospho Ser68).
Specificity:	This antibody detects endogenous levels of ATRIP only when phosphorylated at Ser68.
Applications:	WB, ELISA
Recommended Dilutions:	WB: 1:500-1:1000, ELISA: 1:40000
Reactivity:	Human, Mouse, Rat
Immunogen:	Synthetic peptide derived from human ATRIP around the phosphorylation site of Ser68 (amino acids 34-83).
Host:	Rabbit
Clonality:	Polyclonal
Isotype:	IgG
Conjugate:	Unconjugated
Purification:	Purified from rabbit serum by antigen affinity chromatography using the immunizing phospho peptide.
Molecular Weight:	85kDa
Product Form:	Liquid
Formulation:	Supplied in Phosphate Buffered Saline (without Mg <sup>2+</sup> and Ca <sup>2+</sup> ), pH 7.4, with 150mM NaCl, 0.02% Sodium Azide, and 50% Glycerol.
Storage:	Shipped at 4°C. Upon delivery aliquot and store at -20°C. Avoid freeze / thaw cycles.
Disclaimer:	This product is for research use only. It is not intended for diagnostic or therapeutic use.

## Anti-ATRIP (phospho Ser68) Antibody (A94090)

### Images:



Western blot analysis of lysates from NIH/3T3 cells using Anti-ATRIP (phospho Ser68) Antibody. The right hand lane represents a negative control, where the antibody is blocked by the immunising peptide.



Western blot analysis of NIH 3T3 cells using Anti-ATRIP (phospho Ser68) Antibody.