

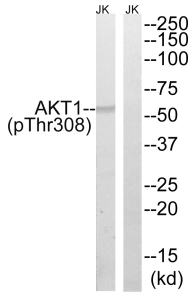
Anti-AKT1 (phospho Thr308) Antibody (A94094)

Specifications:

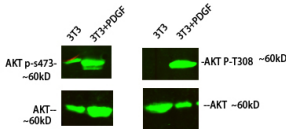
Name:	Anti-AKT1 (phospho Thr308) Antibody
Description:	Rabbit polyclonal antibody to AKT1 (phospho Thr308).
Specificity:	This antibody detects endogenous levels of AKT1 only when phosphorylated at Thr308.
Applications:	WB, ELISA
Recommended Dilutions:	WB: 1:500-1:1000, ELISA: 1:40000
Reactivity:	Human, Mouse, Rat
Immunogen:	Synthetic peptide derived from human AKT1 around the phosphorylation site of Thr308 (amino acids 274-323).
Host:	Rabbit
Clonality:	Polyclonal
Isotype:	IgG
Conjugate:	Unconjugated
Purification:	Purified from rabbit serum by antigen affinity chromatography using the immunizing phospho peptide.
Molecular Weight:	55kDa
Product Form:	Liquid
Formulation:	Supplied in Phosphate Buffered Saline (without Mg ²⁺ and Ca ²⁺), pH 7.4, with 150mM NaCl, 0.02% Sodium Azide, and 50% Glycerol.
Storage:	Shipped at 4°C. Upon delivery aliquot and store at -20°C. Avoid freeze / thaw cycles.
Disclaimer:	This product is for research use only. It is not intended for diagnostic or therapeutic use.

Anti-AKT1 (phospho Thr308) Antibody (A94094)

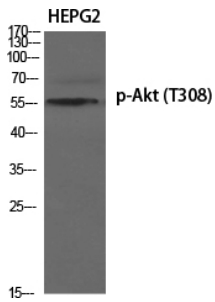
Images:



Western blot analysis of lysates from Jurkat cells treated with EGF 200ng/ml 5' using Anti-AKT1 (phospho Thr308) Antibody. The right hand lane represents a negative control, where the antibody is blocked by the immunising peptide.



Western blot analysis of 3T3 cells treated with PDGF using Anti-AKT1 (phospho Thr308) Antibody at 1:1,000 (4°C overnight). Goat Anti-Rabbit IgG (IRDye 800) was used as a secondary at 1:5,000 (25°C, 1 hour).



Western blot analysis of various cells using Anti-AKT1 (phospho Thr308) Antibody.