

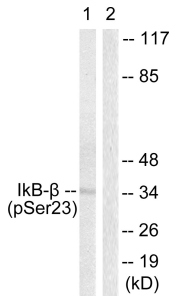
Anti-IkappaB-beta (phospho Ser23) Antibody (A94127)

Specifications:

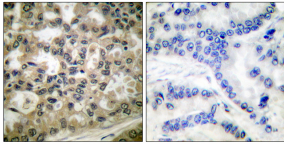
Name:	Anti-IkappaB-beta (phospho Ser23) Antibody
Description:	Rabbit polyclonal antibody to IkappaB-beta (phospho Ser23).
Specificity:	This antibody detects endogenous levels of IkappaB-beta only when phosphorylated at Ser23.
Applications:	WB, IHC, IF, ELISA
Recommended Dilutions:	WB: 1:500-1:1000, IHC: 1:50-1:100, ELISA: 1:20000
Reactivity:	Human, Mouse, Rat
Immunogen:	Synthetic peptide derived from human IkappaB-beta around the phosphorylation site of Ser23 (amino acids 8-57).
Host:	Rabbit
Clonality:	Polyclonal
Isotype:	IgG
Conjugate:	Unconjugated
Purification:	Purified from rabbit serum by antigen affinity chromatography using the immunizing phospho peptide.
Molecular Weight:	37kDa
Product Form:	Liquid
Formulation:	Supplied in Phosphate Buffered Saline (without Mg ²⁺ and Ca ²⁺), pH 7.4, with 150mM NaCl, 0.02% Sodium Azide, and 50% Glycerol.
Storage:	Shipped at 4°C. Upon delivery aliquot and store at -20°C. Avoid freeze / thaw cycles.
Disclaimer:	This product is for research use only. It is not intended for diagnostic or therapeutic use.

Anti-IkappaB-beta (phospho Ser23) Antibody (A94127)

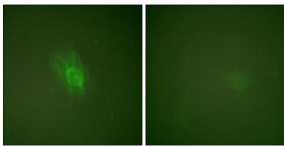
Images:



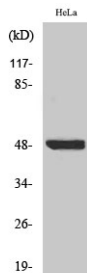
Western blot analysis of lysates from HeLa cells treated with TNF-a 20ng/ml 5' using Anti-IkappaB-beta (phospho Ser23) Antibody. The right hand lane represents a negative control, where the antibody is blocked by the immunising peptide.



Immunohistochemical analysis of paraffin-embedded human lung carcinoma using Anti-IkappaB-beta (phospho Ser23) Antibody. The right hand panel represents a negative control, where the antibody was pre-incubated with the immunising peptide.



Immunofluorescence analysis of HeLa cells, treated with TNF-a 20nM 15', using Anti-IkappaB-beta (phospho Ser23) Antibody. The right hand panel represents a negative control, where the antibody was pre-incubated with the immunising peptide.



Western blot analysis of various cells using Anti-IkappaB-beta (phospho Ser23) Antibody.