

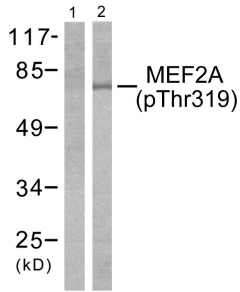
Anti-MEF2A (phospho Thr319) Antibody (A94187)

Specifications:

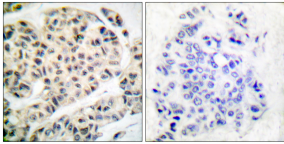
Name:	Anti-MEF2A (phospho Thr319) Antibody
Description:	Rabbit polyclonal antibody to MEF2A (phospho Thr319).
Specificity:	This antibody detects endogenous levels of MEF2A only when phosphorylated at Thr319.
Applications:	WB, IHC, ELISA
Recommended Dilutions:	IHC: 1:50-1:100, ELISA: 1:10000
Reactivity:	Human, Mouse, Rat
Immunogen:	Synthetic peptide derived from human MEF2A around the phosphorylation site of Thr319 (amino acids 296-345).
Host:	Rabbit
Clonality:	Polyclonal
Isotype:	IgG
Conjugate:	Unconjugated
Purification:	Purified from rabbit serum by antigen affinity chromatography using the immunizing phospho peptide.
Molecular Weight:	54kDa
Product Form:	Liquid
Formulation:	Supplied in Phosphate Buffered Saline (without Mg ²⁺ and Ca ²⁺), pH 7.4, with 150mM NaCl, 0.02% Sodium Azide, and 50% Glycerol.
Storage:	Shipped at 4°C. Upon delivery aliquot and store at -20°C. Avoid freeze / thaw cycles.
Disclaimer:	This product is for research use only. It is not intended for diagnostic or therapeutic use.

Anti-MEF2A (phospho Thr319) Antibody (A94187)

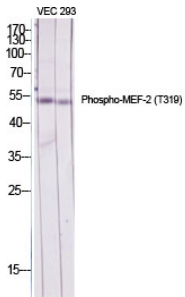
Images:



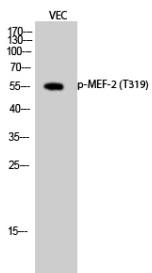
Western blot analysis of lysates from K562 cells treated with UV 15' using Anti-MEF2A (phospho Thr319) Antibody. The left hand lane represents a negative control, where the antibody is blocked by the immunising peptide.



Immunohistochemical analysis of paraffin-embedded human breast carcinoma using Anti-MEF2A (phospho Thr319) Antibody. The right hand panel represents a negative control, where the antibody was pre-incubated with the immunising peptide.



Western blot analysis of various cells using Anti-MEF2A (phospho Thr319) Antibody.



Western blot analysis of VEC cells using Anti-MEF2A (phospho Thr319) Antibody.