

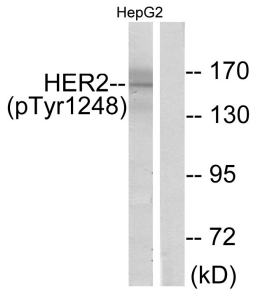
Anti-HER2 (phospho Tyr1248) Antibody (A94195)

Specifications:

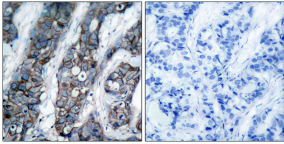
Name:	Anti-HER2 (phospho Tyr1248) Antibody
Description:	Rabbit polyclonal antibody to HER2 (phospho Tyr1248).
Specificity:	This antibody detects endogenous levels of HER2 only when phosphorylated at Tyr1248.
Applications:	WB, IHC, ELISA
Recommended Dilutions:	WB: 1:500-1:1000, ELISA: 1:10000
Reactivity:	Human, Mouse, Rat
Immunogen:	Synthetic peptide derived from human HER2 around the phosphorylation site of Tyr1248 (amino acids 1206-1255).
Host:	Rabbit
Clonality:	Polyclonal
Isotype:	IgG
Conjugate:	Unconjugated
Purification:	Purified from rabbit serum by antigen affinity chromatography using the immunizing phospho peptide.
Molecular Weight:	137kDa
Product Form:	Liquid
Formulation:	Supplied in Phosphate Buffered Saline (without Mg ²⁺ and Ca ²⁺), pH 7.4, with 150mM NaCl, 0.02% Sodium Azide, and 50% Glycerol.
Storage:	Shipped at 4°C. Upon delivery aliquot and store at -20°C. Avoid freeze / thaw cycles.
Disclaimer:	This product is for research use only. It is not intended for diagnostic or therapeutic use.

Anti-HER2 (phospho Tyr1248) Antibody (A94195)

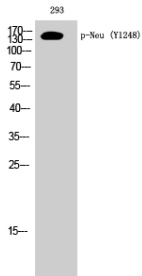
Images:



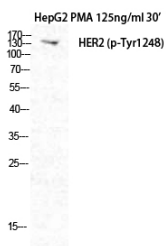
Western blot analysis of lysates from HepG2 cells treated with PMA 125ng/ml 30' using Anti-HER2 (phospho Tyr1248) Antibody. The right hand lane represents a negative control, where the antibody is blocked by the immunising peptide.



Immunohistochemical analysis of paraffin-embedded human breast carcinoma using Anti-HER2 (phospho Tyr1248) Antibody. The right hand panel represents a negative control, where the antibody was pre-incubated with the immunising peptide.



Western blot analysis of 293 cells using Anti-HER2 (phospho Tyr1248) Antibody.



Western blot analysis of HepG2 + PMA cells using Anti-HER2 (phospho Tyr1248) Antibody.