

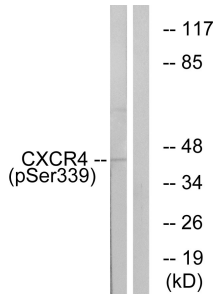
Anti-CXCR4 (phospho Ser339) Antibody (A94207)

Specifications:

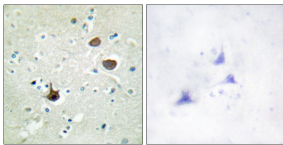
Name:	Anti-CXCR4 (phospho Ser339) Antibody
Description:	Rabbit polyclonal antibody to CXCR4 (phospho Ser339).
Specificity:	This antibody detects endogenous levels of CXCR4 only when phosphorylated at Ser339.
Applications:	WB, IHC, IF, ELISA
Recommended Dilutions:	IHC: 1:50-1:100, IF: 1:100-1:1000, ELISA: 1:10000
Reactivity:	Human, Mouse
Immunogen:	Synthetic peptide derived from human CXCR4 around the phosphorylation site of Ser339 (amino acids 303-352).
Host:	Rabbit
Clonality:	Polyclonal
Isotype:	IgG
Conjugate:	Unconjugated
Purification:	Purified from rabbit serum by antigen affinity chromatography using the immunizing phospho peptide.
Molecular Weight:	39kDa
Product Form:	Liquid
Formulation:	Supplied in Phosphate Buffered Saline (without Mg ²⁺ and Ca ²⁺), pH 7.4, with 150mM NaCl, 0.02% Sodium Azide, and 50% Glycerol.
Storage:	Shipped at 4°C. Upon delivery aliquot and store at -20°C. Avoid freeze / thaw cycles.
Disclaimer:	This product is for research use only. It is not intended for diagnostic or therapeutic use.

Anti-CXCR4 (phospho Ser339) Antibody (A94207)

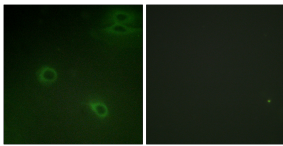
Images:



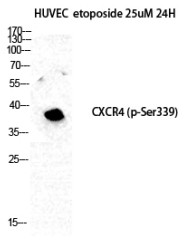
Western blot analysis of lysates from HUVEC cells treated with etoposide 25uM 24H using Anti-CXCR4 (phospho Ser339) Antibody. The right hand lane represents a negative control, where the antibody is blocked by the immunising peptide.



Immunohistochemical analysis of paraffin-embedded human brain using Anti-CXCR4 (phospho Ser339) Antibody. The right hand panel represents a negative control, where the antibody was pre-incubated with the immunising peptide.



Immunofluorescence analysis of HeLa cells using Anti-CXCR4 (phospho Ser339) Antibody. The right hand panel represents a negative control, where the antibody was pre-incubated with the immunising peptide.



Western blot analysis of HuvEc etoposide 25uM 24H cells using Anti-CXCR4 (phospho Ser339) Antibody.