

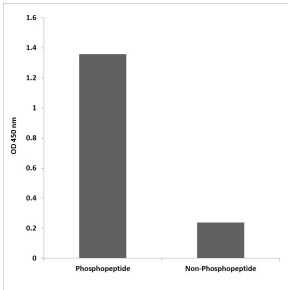
Anti-YB1 (phospho Ser102) Antibody (A94246)

Specifications:

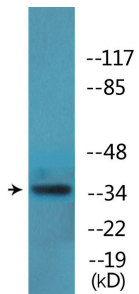
Name:	Anti-YB1 (phospho Ser102) Antibody
Description:	Rabbit polyclonal antibody to YB1 (phospho Ser102).
Specificity:	This antibody detects endogenous levels of YBX1 only when phosphorylated at Ser102.
Applications:	WB, ELISA
Recommended Dilutions:	WB: 1:500-1:1000, ELISA: 1:10000
Reactivity:	Human, Mouse, Rat
Immunogen:	Synthetic phospho-peptide derived from human YB1 around the phosphorylation site of Ser102.
Host:	Rabbit
Clonality:	Polyclonal
Isotype:	IgG
Conjugate:	Unconjugated
Purification:	Purified from rabbit serum by antigen affinity chromatography using the immunizing phospho peptide.
Molecular Weight:	35kDa
Product Form:	Liquid
Formulation:	Supplied in Phosphate Buffered Saline (without Mg ²⁺ and Ca ²⁺), pH 7.4, with 150mM NaCl, 0.02% Sodium Azide, and 50% Glycerol.
Storage:	Shipped at 4°C. Upon delivery aliquot and store at -20°C. Avoid freeze / thaw cycles.
Disclaimer:	This product is for research use only. It is not intended for diagnostic or therapeutic use.

Anti-YB1 (phospho Ser102) Antibody (A94246)

Images:



ELISA for immunogen phosphopeptide (left) and non-phosphopeptide (right) using Anti-YB1 (phospho Ser102) Antibody.



Western blot analysis of lysates from HepG2 cells treated with PMA 125ng/ml 15' using Anti-YB1 (phospho Ser102) Antibody.