

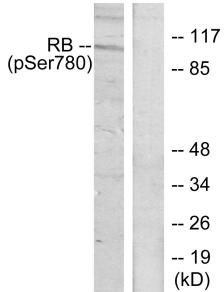
Anti-Retinoblastoma (phospho Ser780) Antibody (A94350)

Specifications:

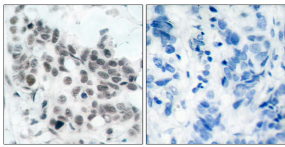
Name:	Anti-Retinoblastoma (phospho Ser780) Antibody
Description:	Rabbit polyclonal antibody to Retinoblastoma (phospho Ser780).
Specificity:	This antibody detects endogenous levels of Retinoblastoma only when phosphorylated at Ser780.
Applications:	WB, IHC, ELISA
Recommended Dilutions:	WB: 1:500-1:1000, IF: 1:100-1:500, ELISA: 1:40000
Reactivity:	Human, Mouse, Rat
Immunogen:	Synthetic peptide derived from human Retinoblastoma around the phosphorylation site of Ser780 (amino acids 751-800).
Host:	Rabbit
Clonality:	Polyclonal
Isotype:	IgG
Conjugate:	Unconjugated
Purification:	Purified from rabbit serum by antigen affinity chromatography using the immunizing peptide.
Molecular Weight:	106kDa
Product Form:	Liquid
Formulation:	Supplied in Phosphate Buffered Saline (without Mg ²⁺ and Ca ²⁺), pH 7.4, with 150mM NaCl, 0.02% Sodium Azide, and 50% Glycerol.
Storage:	Shipped at 4°C. Upon delivery aliquot and store at -20°C. Avoid freeze / thaw cycles.
Disclaimer:	This product is for research use only. It is not intended for diagnostic or therapeutic use.

Anti-Retinoblastoma (phospho Ser780) Antibody (A94350)

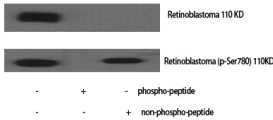
Images:



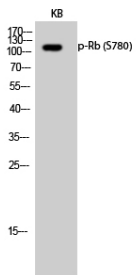
Western blot analysis of lysates from K562 cells treated with serum 10% using Anti-Retinoblastoma (phospho Ser780) Antibody. The right hand lane represents a negative control, where the antibody is blocked by the immunising peptide.



Immunohistochemical analysis of paraffin-embedded human breast carcinoma using Anti-Retinoblastoma (phospho Ser780) Antibody. The right hand panel represents a negative control, where the antibody was pre-incubated with the immunising peptide.



Western blot analysis of various cells using Anti-Retinoblastoma (phospho Ser780) Antibody.



Western blot analysis of KB cells using Anti-Retinoblastoma (phospho Ser780) Antibody.