

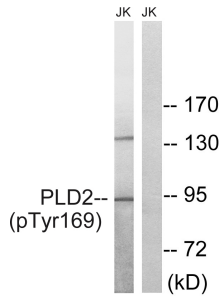
Anti-PLD2 (phospho Tyr169) Antibody (A94417)

Specifications:

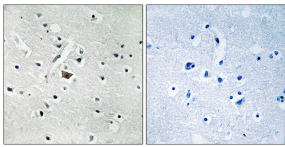
Name:	Anti-PLD2 (phospho Tyr169) Antibody
Description:	Rabbit polyclonal antibody to PLD2 (phospho Tyr169).
Specificity:	This antibody detects endogenous levels of PLD2 only when phosphorylated at Tyr169.
Applications:	WB, IHC, ELISA
Recommended Dilutions:	WB: 1:500-1:1000, IHC: 1:50-1:100, ELISA: 1:10000
Reactivity:	Human, Mouse, Rat
Immunogen:	Synthetic peptide derived from human PLD2 around the phosphorylation site of Tyr169 (amino acids 136-185).
Host:	Rabbit
Clonality:	Polyclonal
Isotype:	IgG
Conjugate:	Unconjugated
Purification:	Purified from rabbit serum by antigen affinity chromatography using the immunizing phospho peptide.
Molecular Weight:	105kDa
Product Form:	Liquid
Formulation:	Supplied in Phosphate Buffered Saline (without Mg ²⁺ and Ca ²⁺), pH 7.4, with 150mM NaCl, 0.02% Sodium Azide, and 50% Glycerol.
Storage:	Shipped at 4°C. Upon delivery aliquot and store at -20°C. Avoid freeze / thaw cycles.
Disclaimer:	This product is for research use only. It is not intended for diagnostic or therapeutic use.

Anti-PLD2 (phospho Tyr169) Antibody (A94417)

Images:



Western blot analysis of lysates from Jurkat cells treated with TNF 20ng/ml 30' using Anti-PLD2 (phospho Tyr169) Antibody. The right hand lane represents a negative control, where the antibody is blocked by the immunising peptide.



Immunohistochemical analysis of paraffin-embedded human brain using Anti-PLD2 (phospho Tyr169) Antibody. The right hand panel represents a negative control, where the antibody was pre-incubated with the immunising peptide.