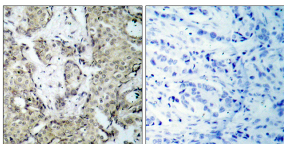


## Anti-MKK6 (phospho Ser207) Antibody (A94430)

### Specifications:

Name:	Anti-MKK6 (phospho Ser207) Antibody
Description:	Rabbit polyclonal antibody to MKK6 (phospho Ser207).
Specificity:	This antibody detects endogenous levels of MKK6 only when phosphorylated at Ser207.
Applications:	WB, IHC, ELISA
Recommended Dilutions:	WB: 1:500-1:1000, IHC: 1:50-1:100, ELISA: 1:5000
Reactivity:	Human, Mouse, Rat
Immunogen:	Synthetic peptide derived from human MKK6 around the phosphorylation site of Ser207 (amino acids 173-222).
Host:	Rabbit
Clonality:	Polyclonal
Isotype:	IgG
Conjugate:	Unconjugated
Purification:	Purified from rabbit serum by antigen affinity chromatography using the immunizing phospho peptide.
Molecular Weight:	37kDa
Product Form:	Liquid
Formulation:	Supplied in Phosphate Buffered Saline (without Mg <sup>2+</sup> and Ca <sup>2+</sup> ), pH 7.4, with 150mM NaCl, 0.02% Sodium Azide, and 50% Glycerol.
Storage:	Shipped at 4°C. Upon delivery aliquot and store at -20°C. Avoid freeze / thaw cycles.
Disclaimer:	This product is for research use only. It is not intended for diagnostic or therapeutic use.

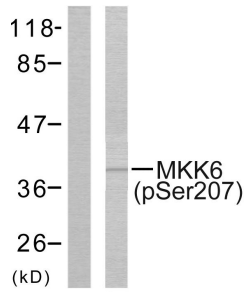
### Images:



Immunohistochemical analysis of paraffin-embedded human breast carcinoma using Anti-MKK6 (phospho Ser207) Antibody. The right hand panel represents a negative control, where the antibody was pre-incubated with the immunising peptide.

## Anti-MKK6 (phospho Ser207) Antibody (A94430)

Images continued:



Western blot analysis of lysates from MDA-MB-435 cells using Anti-MKK6 (phospho Ser207) Antibody. The left hand lane represents a negative control, where the antibody is blocked by the immunising peptide.