

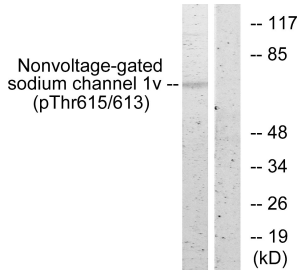
# Anti-Nonvoltage-gated Sodium Channel 1 (phospho Thr615) Antibody (A94551)

## Specifications:

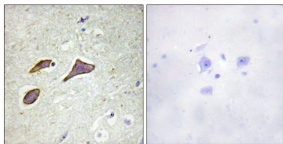
Name:	Anti-Nonvoltage-gated Sodium Channel 1 (phospho Thr615) Antibody
Description:	Rabbit polyclonal antibody to Nonvoltage-gated Sodium Channel 1 (phospho Thr615).
Specificity:	This antibody detects endogenous levels of Nonvoltage-gated Sodium Channel 1 only when phosphorylated at Thr615.
Applications:	WB, IHC, IF, ELISA
Recommended Dilutions:	WB: 1:500-1:1000, IF: 1:100-1:500, ELISA: 1:10000
Reactivity:	Human, Mouse, Rat
Immunogen:	Synthetic peptide derived from human Nonvoltage-gated Sodium Channel 1 around the phosphorylation site of Thr615 (amino acids 581-630).
Host:	Rabbit
Clonality:	Polyclonal
Isotype:	IgG
Conjugate:	Unconjugated
Purification:	Purified from rabbit serum by antigen affinity chromatography using the immunizing phospho peptide.
Molecular Weight:	72kDa
Product Form:	Liquid
Formulation:	Supplied in Phosphate Buffered Saline (without Mg <sup>2+</sup> and Ca <sup>2+</sup> ), pH 7.4, with 150mM NaCl, 0.02% Sodium Azide, and 50% Glycerol.
Storage:	Shipped at 4°C. Upon delivery aliquot and store at -20°C. Avoid freeze / thaw cycles.
Disclaimer:	This product is for research use only. It is not intended for diagnostic or therapeutic use.

# Anti-Nonvoltage-gated Sodium Channel 1 (phospho Thr615) Antibody (A94551)

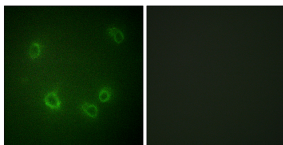
## Images:



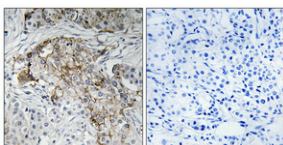
Western blot analysis of lysates from HeLa cells using Anti-Nonvoltage-gated Sodium Channel 1 (phospho Thr615) Antibody. The right hand lane represents a negative control, where the antibody is blocked by the immunising peptide.



Immunohistochemical analysis of paraffin-embedded human brain using Anti-Nonvoltage-gated Sodium Channel 1 (phospho Thr615) Antibody. The right hand panel represents a negative control, where the antibody was pre-incubated with the immunising peptide.



Immunofluorescence analysis of COS7 cells using Anti-Nonvoltage-gated Sodium Channel 1 (phospho Thr615) Antibody. The right hand panel represents a negative control, where the antibody was pre-incubated with the immunising peptide.



Immunohistochemical analysis of paraffin-embedded human breast cancer using Anti-Nonvoltage-gated Sodium Channel 1 (phospho Thr615) Antibody 1:100 (4°C overnight). The right hand panel represents a negative control, where the antibody was pre-incubated with the immunising peptide.