

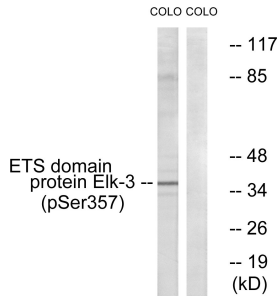
## Anti-Elk3 (phospho Ser357) Antibody (A94623)

### Specifications:

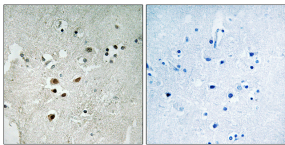
Name:	Anti-Elk3 (phospho Ser357) Antibody
Description:	Rabbit polyclonal antibody to Elk3 (phospho Ser357).
Specificity:	This antibody detects endogenous levels of Elk3 only when phosphorylated at Ser357.
Applications:	WB, IHC, IF, ELISA
Recommended Dilutions:	WB: 1:500-1:1000, IHC: 1:50-1:100, IF: 1:100-1:500, ELISA: 1:20000
Reactivity:	Human, Mouse
Immunogen:	Synthetic peptide derived from human Elk3 around the phosphorylation site of Ser357 (amino acids 323-372).
Host:	Rabbit
Clonality:	Polyclonal
Isotype:	IgG
Conjugate:	Unconjugated
Purification:	Purified from rabbit serum by antigen affinity chromatography using the immunizing phospho peptide.
Molecular Weight:	44kDa
Product Form:	Liquid
Formulation:	Supplied in Phosphate Buffered Saline (without Mg <sup>2+</sup> and Ca <sup>2+</sup> ), pH 7.4, with 150mM NaCl, 0.02% Sodium Azide, and 50% Glycerol.
Storage:	Shipped at 4°C. Upon delivery aliquot and store at -20°C. Avoid freeze / thaw cycles.
Disclaimer:	This product is for research use only. It is not intended for diagnostic or therapeutic use.

## Anti-Elk3 (phospho Ser357) Antibody (A94623)

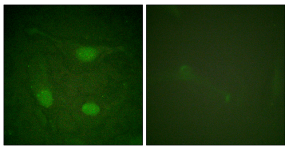
### Images:



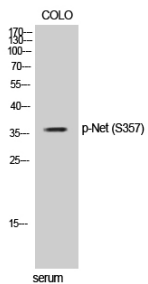
Western blot analysis of lysates from COLO205 cells treated with serum 20% 15' using Anti-Elk3 (phospho Ser357) Antibody. The right hand lane represents a negative control, where the antibody is blocked by the immunising peptide.



Immunohistochemical analysis of paraffin-embedded human brain using Anti-Elk3 (phospho Ser357) Antibody. The right hand panel represents a negative control, where the antibody was pre-incubated with the immunising peptide.



Immunofluorescence analysis of HeLa cells using Anti-Elk3 (phospho Ser357) Antibody. The right hand panel represents a negative control, where the antibody was pre-incubated with the immunising peptide.



Western blot analysis of COLO cells using Anti-Elk3 (phospho Ser357) Antibody.