

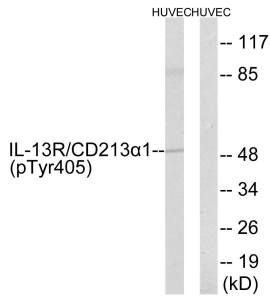
Anti-IL-13R alpha1 (phospho Tyr405) Antibody (A94783)

Specifications:

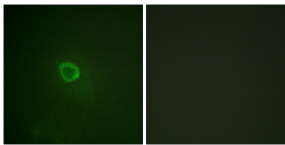
Name:	Anti-IL-13R alpha1 (phospho Tyr405) Antibody
Description:	Rabbit polyclonal antibody to IL-13R alpha1 (phospho Tyr405).
Specificity:	This antibody detects endogenous levels of IL-13R alpha1 only when phosphorylated at Tyr405.
Applications:	WB, IF, ELISA
Recommended Dilutions:	WB: 1:500-1:1000, IHC: 1:50-1:100, ELISA: 1:20000
Reactivity:	Human, Mouse, Rat
Immunogen:	Synthetic peptide derived from human IL-13R alpha1 around the phosphorylation site of Tyr405 (amino acids 371-420).
Host:	Rabbit
Clonality:	Polyclonal
Isotype:	IgG
Conjugate:	Unconjugated
Purification:	Purified from rabbit serum by antigen affinity chromatography using the immunizing phospho peptide.
Molecular Weight:	48kDa
Product Form:	Liquid
Formulation:	Supplied in Phosphate Buffered Saline (without Mg ²⁺ and Ca ²⁺), pH 7.4, with 150mM NaCl, 0.02% Sodium Azide, and 50% Glycerol.
Storage:	Shipped at 4°C. Upon delivery aliquot and store at -20°C. Avoid freeze / thaw cycles.
Disclaimer:	This product is for research use only. It is not intended for diagnostic or therapeutic use.

Anti-IL-13R alpha1 (phospho Tyr405) Antibody (A94783)

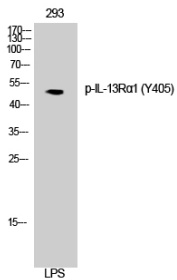
Images:



Western blot analysis of lysates from HUVEC cells treated with serum 20% 15' using Anti-IL-13R alpha1 (phospho Tyr405) Antibody. The right hand lane represents a negative control, where the antibody is blocked by the immunising peptide.



Immunofluorescence analysis of HepG2 cells using Anti-IL-13R alpha1 (phospho Tyr405) Antibody. The right hand panel represents a negative control, where the antibody was pre-incubated with the immunising peptide.



Western blot analysis of 3T3 cells using Anti-IL-13R alpha1 (phospho Tyr405) Antibody.