

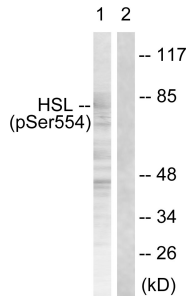
Anti-HSL (phospho Ser855 + Ser554) Antibody (A94785)

Specifications:

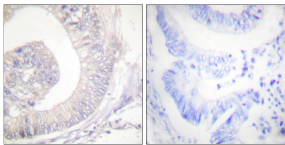
Name:	Anti-HSL (phospho Ser855 + Ser554) Antibody
Description:	Rabbit polyclonal antibody to HSL (phospho Ser855 + Ser554).
Specificity:	This antibody detects endogenous levels of HSL only when phosphorylated at Ser855/554.
Applications:	WB, IHC, ELISA
Recommended Dilutions:	WB: 1:500-1:1000, ELISA: 1:10000
Reactivity:	Human, Mouse, Rat
Immunogen:	Synthetic peptide derived from human HSL around the phosphorylation site of Ser855/554 (amino acids 520-569).
Host:	Rabbit
Clonality:	Polyclonal
Isotype:	IgG
Conjugate:	Unconjugated
Purification:	Purified from rabbit serum by antigen affinity chromatography using the immunizing phospho peptide.
Molecular Weight:	116kDa
Product Form:	Liquid
Formulation:	Supplied in Phosphate Buffered Saline (without Mg ²⁺ and Ca ²⁺), pH 7.4, with 150mM NaCl, 0.02% Sodium Azide, and 50% Glycerol.
Storage:	Shipped at 4°C. Upon delivery aliquot and store at -20°C. Avoid freeze / thaw cycles.
Disclaimer:	This product is for research use only. It is not intended for diagnostic or therapeutic use.

Anti-HSL (phospho Ser855 + Ser554) Antibody (A94785)

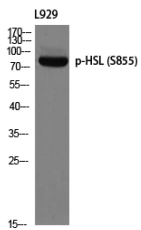
Images:



Western blot analysis of lysates from HeLa cells treated with Adriamycin 0.5ng/ml 24h using Anti-HSL (phospho Ser855 + Ser554) Antibody. The right hand lane represents a negative control, where the antibody is blocked by the immunising peptide.



Immunohistochemical analysis of paraffin-embedded human colon carcinoma using Anti-HSL (phospho Ser855 + Ser554) Antibody. The right hand panel represents a negative control, where the antibody was pre-incubated with the immunising peptide.



Western blot analysis of L929 using Anti-HSL (phospho Ser855 + Ser554) Antibody.