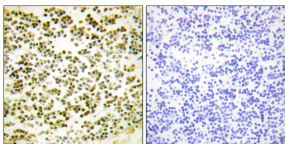


## Anti-RBL1 (phospho Thr369) Antibody (A94826)

### Specifications:

Name:	Anti-RBL1 (phospho Thr369) Antibody
Description:	Rabbit polyclonal antibody to RBL1 (phospho Thr369).
Specificity:	This antibody detects endogenous levels of RBL1 only when phosphorylated at Thr369.
Applications:	IHC, ELISA
Recommended Dilutions:	IHC: 1:50-1:100, ELISA: 1:5000
Reactivity:	Human, Mouse
Immunogen:	Synthetic peptide derived from human RBL1 around the phosphorylation site of Thr369 (amino acids 335-384).
Host:	Rabbit
Clonality:	Polyclonal
Isotype:	IgG
Conjugate:	Unconjugated
Purification:	Purified from rabbit serum by antigen affinity chromatography using the immunizing phospho peptide.
Molecular Weight:	120kDa
Product Form:	Liquid
Formulation:	Supplied in Phosphate Buffered Saline (without Mg <sup>2+</sup> and Ca <sup>2+</sup> ), pH 7.4, with 150mM NaCl, 0.02% Sodium Azide, and 50% Glycerol.
Storage:	Shipped at 4°C. Upon delivery aliquot and store at -20°C. Avoid freeze / thaw cycles.
Disclaimer:	This product is for research use only. It is not intended for diagnostic or therapeutic use.

### Images:



Immunohistochemical analysis of paraffin-embedded human lymph node using Anti-RBL1 (phospho Thr369) Antibody. The right hand panel represents a negative control, where the antibody was pre-incubated with the immunising peptide.