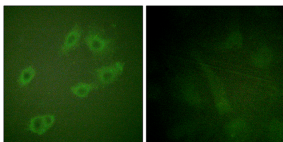


Anti-HER3 (phospho Tyr1222) Antibody (A94911)

Specifications:

Name:	Anti-HER3 (phospho Tyr1222) Antibody
Description:	Rabbit polyclonal antibody to HER3 (phospho Tyr1222).
Specificity:	This antibody detects endogenous levels of HER3 only when phosphorylated at Tyr1222.
Applications:	WB, IHC, IF, ELISA
Recommended Dilutions:	IF: 1:100-1:500, ELISA: 1:10000
Reactivity:	Human, Human, Human
Immunogen:	Synthetic peptide derived from human HER3 around the phosphorylation site of Tyr1222 (amino acids 1191-1240).
Host:	Rabbit
Clonality:	Polyclonal
Isotype:	IgG
Conjugate:	Unconjugated
Purification:	Purified from rabbit serum by antigen affinity chromatography using the immunizing phospho peptide.
Molecular Weight:	148kDa
Product Form:	Liquid
Formulation:	Supplied in Phosphate Buffered Saline (without Mg ²⁺ and Ca ²⁺), pH 7.4, with 150mM NaCl, 0.02% Sodium Azide, and 50% Glycerol.
Storage:	Shipped at 4°C. Upon delivery aliquot and store at -20°C. Avoid freeze / thaw cycles.
Disclaimer:	This product is for research use only. It is not intended for diagnostic or therapeutic use.

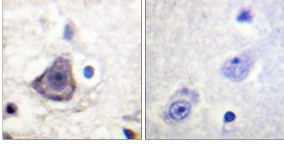
Images:



Immunofluorescence analysis of HUVEC cells using Anti-HER3 (phospho Tyr1222) Antibody. The right hand panel represents a negative control, where the antibody was pre-incubated with the immunising peptide.

Anti-HER3 (phospho Tyr1222) Antibody (A94911)

Images continued:



Immunohistochemical analysis of paraffin-embedded human brain using Anti-HER3 (phospho Tyr1222) Antibody. The right hand panel represents a negative control, where the antibody was pre-incubated with the immunising peptide.