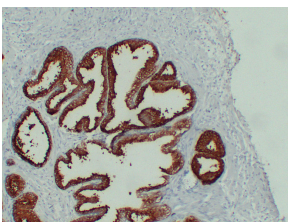


Anti-Prostate Specific Antigen Antibody [ABT-PSA] (A94916)

Specifications:

Name:	Anti-Prostate Specific Antigen Antibody [ABT-PSA]
Description:	Mouse monoclonal (ABT-PSA) antibody to Prostate Specific Antigen.
Applications:	IHC
Recommended Dilutions:	WB: 1:500-1:1000, IHC: 1:50-1:100, IF: 1:100-1:500, ELISA: 1:1000
Reactivity:	Human
Immunogen:	Synthetic peptide derived from human Prostate-Specific Antigen.
Host:	Mouse
Clonality:	Monoclonal
Clone ID:	ABT-PSA
Isotype:	IgG
Conjugate:	Unconjugated
Purification:	Purified from rabbit serum by antigen affinity chromatography using the immunizing peptide.
Product Form:	Liquid
Formulation:	Supplied in Tris Buffered Saline with 0.5% Bovine Serum Albumin and 0.1% Kathon CG/ICP.
Storage:	Shipped at 4°C. Upon delivery aliquot and store at -20°C. Avoid freeze / thaw cycles.
Disclaimer:	This product is for research use only. It is not intended for diagnostic or therapeutic use.

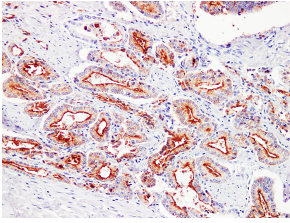
Images:



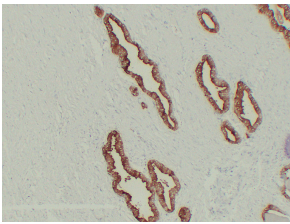
Immunohistochemical analysis of paraffin-embedded human Prostate using Anti-Prostate Specific Antigen Antibody.

Anti-Prostate Specific Antigen Antibody [ABT-PSA] (A94916)

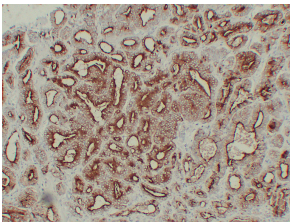
Images continued:



Immunohistochemical analysis of paraffin-embedded human Prostatic carcinoma using Anti-Prostate Specific Antigen Antibody.



Immunohistochemical analysis of paraffin-embedded human Prostatic carcinoma using Anti-Prostate Specific Antigen Antibody.



Immunohistochemical analysis of paraffin-embedded human Prostatic carcinoma using Anti-Prostate Specific Antigen Antibody.