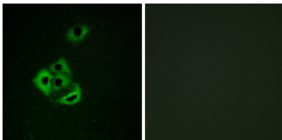


Anti-MCL1 (phospho Ser159) Antibody (A94927)

Specifications:

Name:	Anti-MCL1 (phospho Ser159) Antibody
Description:	Rabbit polyclonal antibody to MCL1 (phospho Ser159).
Specificity:	This antibody detects endogenous levels of MCL1 only when phosphorylated at Ser159.
Applications:	IF, ELISA
Recommended Dilutions:	IF: 1:100-1:500, ELISA: 1:1000
Reactivity:	Human, Mouse
Immunogen:	Synthetic peptide derived from human MCL1 around the phosphorylation site of Ser159 (amino acids 125-174).
Host:	Rabbit
Clonality:	Polyclonal
Isotype:	IgG
Conjugate:	Unconjugated
Purification:	Purified from rabbit serum by antigen affinity chromatography using the immunizing phospho peptide.
Molecular Weight:	37kDa
Product Form:	Liquid
Formulation:	Supplied in Phosphate Buffered Saline (without Mg ²⁺ and Ca ²⁺), pH 7.4, with 150mM NaCl, 0.02% Sodium Azide, and 50% Glycerol.
Storage:	Shipped at 4°C. Upon delivery aliquot and store at -20°C. Avoid freeze / thaw cycles.
Disclaimer:	This product is for research use only. It is not intended for diagnostic or therapeutic use.

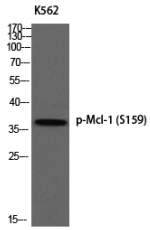
Images:



Immunofluorescence analysis of A549 cells using Anti-MCL1 (phospho Ser159) Antibody. The right hand panel represents a negative control, where the antibody was pre-incubated with the immunising peptide.

Anti-MCL1 (phospho Ser159) Antibody (A94927)

Images continued:



Western blot analysis of K562 using Anti-MCL1 (phospho Ser159) Antibody.