

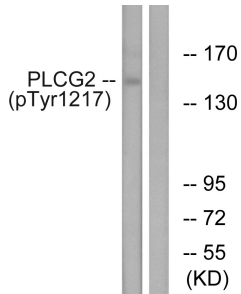
Anti-PLCG2 (phospho Tyr1217) Antibody (A95007)

Specifications:

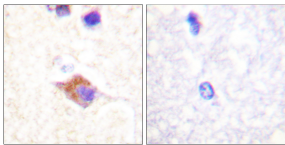
Name:	Anti-PLCG2 (phospho Tyr1217) Antibody
Description:	Rabbit polyclonal antibody to PLCG2 (phospho Tyr1217).
Specificity:	This antibody detects endogenous levels of PLCG2 only when phosphorylated at Tyr1217.
Applications:	WB, IHC, IF, ELISA
Recommended Dilutions:	WB: 1:500-1:1000, ELISA: 1:10000
Reactivity:	Human, Mouse, Rat
Immunogen:	Synthetic peptide derived from human PLCG2 around the phosphorylation site of Tyr1217 (amino acids 1186-1235).
Host:	Rabbit
Clonality:	Polyclonal
Isotype:	IgG
Conjugate:	Unconjugated
Purification:	Purified from rabbit serum by antigen affinity chromatography using the immunizing phospho peptide.
Molecular Weight:	147kDa
Product Form:	Liquid
Formulation:	Supplied in Phosphate Buffered Saline (without Mg ²⁺ and Ca ²⁺), pH 7.4, with 150mM NaCl, 0.02% Sodium Azide, and 50% Glycerol.
Storage:	Shipped at 4°C. Upon delivery aliquot and store at -20°C. Avoid freeze / thaw cycles.
Disclaimer:	This product is for research use only. It is not intended for diagnostic or therapeutic use.

Anti-PLCG2 (phospho Tyr1217) Antibody (A95007)

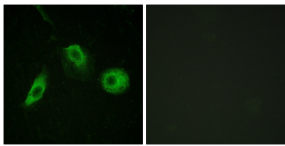
Images:



Western blot analysis of lysates from Jurkat cells treated with UV 15' using Anti-PLCG2 (phospho Tyr1217) Antibody. The right hand lane represents a negative control, where the antibody is blocked by the immunising peptide.



Immunohistochemical analysis of paraffin-embedded human brain using Anti-PLCG2 (phospho Tyr1217) Antibody. The right hand panel represents a negative control, where the antibody was pre-incubated with the immunising peptide.



Immunofluorescence analysis of HeLa cells using Anti-PLCG2 (phospho Tyr1217) Antibody. The right hand panel represents a negative control, where the antibody was pre-incubated with the immunising peptide.