

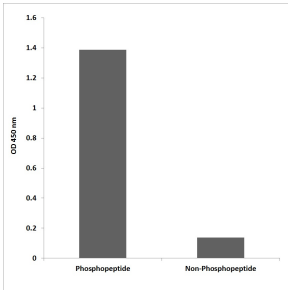
Anti-ATRIP (phospho Ser224) Antibody (A95028)

Specifications:

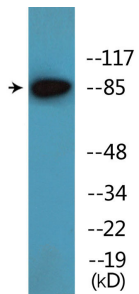
Name:	Anti-ATRIP (phospho Ser224) Antibody
Description:	Rabbit polyclonal antibody to ATRIP (phospho Ser224).
Specificity:	This antibody detects endogenous levels of ATRIP only when phosphorylated at Ser224.
Applications:	WB, IHC, ELISA
Recommended Dilutions:	WB: 1:500-1:1000, IHC: 1:50-1:100, ELISA: 1:10000
Reactivity:	Human
Immunogen:	Synthetic phospho-peptide derived from human ATRIP around the phosphorylation site of Ser224.
Host:	Rabbit
Clonality:	Polyclonal
Isotype:	IgG
Conjugate:	Unconjugated
Purification:	Purified from rabbit serum by antigen affinity chromatography using the immunizing phospho peptide.
Molecular Weight:	85kDa
Product Form:	Liquid
Formulation:	Supplied in Phosphate Buffered Saline (without Mg ²⁺ and Ca ²⁺), pH 7.4, with 150mM NaCl, 0.02% Sodium Azide, and 50% Glycerol.
Storage:	Shipped at 4°C. Upon delivery aliquot and store at -20°C. Avoid freeze / thaw cycles.
Disclaimer:	This product is for research use only. It is not intended for diagnostic or therapeutic use.

Anti-ATRIP (phospho Ser224) Antibody (A95028)

Images:



ELISA for immunogen phosphopeptide (left) and non-phosphopeptide (right) using Anti-ATRIP (phospho Ser224) Antibody.



Western blot analysis of lysates from 293 cells treated with UV 15' using Anti-ATRIP (phospho Ser224) Antibody.