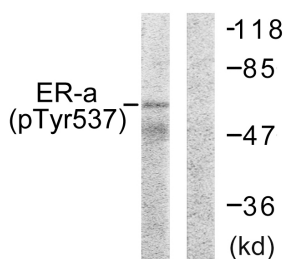


Anti-Estrogen Receptor-alpha (phospho Tyr537) Antibody (A95258)

Specifications:

| | |
|------------------------|--|
| Name: | Anti-Estrogen Receptor-alpha (phospho Tyr537) Antibody |
| Description: | Rabbit polyclonal antibody to Estrogen Receptor-alpha (phospho Tyr537). |
| Specificity: | This antibody detects endogenous levels of Estrogen Receptor-alpha only when phosphorylated at Tyr537. |
| Applications: | WB, IHC, ELISA |
| Recommended Dilutions: | WB: 1:500-1:1000, ELISA: 1:20000 |
| Reactivity: | Human, Mouse, Mouse |
| Immunogen: | Synthetic peptide derived from human Estrogen Receptor-alpha around the phosphorylation site of Tyr537 (amino acids 501-550). |
| Host: | Rabbit |
| Clonality: | Polyclonal |
| Isotype: | IgG |
| Conjugate: | Unconjugated |
| Purification: | Purified from rabbit serum by antigen affinity chromatography using the immunizing phospho peptide. |
| Molecular Weight: | 66kDa |
| Product Form: | Liquid |
| Formulation: | Supplied in Phosphate Buffered Saline (without Mg ²⁺ and Ca ²⁺), pH 7.4, with 150mM NaCl, 0.02% Sodium Azide, and 50% Glycerol. |
| Storage: | Shipped at 4°C. Upon delivery aliquot and store at -20°C. Avoid freeze / thaw cycles. |
| Disclaimer: | This product is for research use only. It is not intended for diagnostic or therapeutic use. |

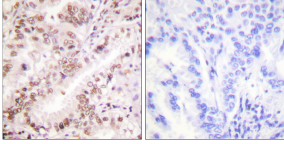
Images:



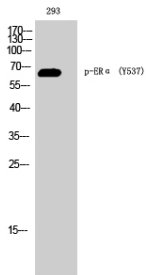
Western blot analysis of lysates from 293 cells using Anti-Estrogen Receptor-alpha (phospho Tyr537) Antibody. The right hand lane represents a negative control, where the antibody is blocked by the immunising peptide.

Anti-Estrogen Receptor-alpha (phospho Tyr537) Antibody (A95258)

Images continued:



Immunohistochemical analysis of paraffin-embedded human lung carcinoma using Anti-Estrogen Receptor-alpha (phospho Tyr537) Antibody. The right hand panel represents a negative control, where the antibody was pre-incubated with the immunising peptide.



Western blot analysis of 293 cells using Anti-Estrogen Receptor-alpha (phospho Tyr537) Antibody.