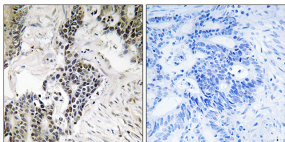


## Anti-CDC25C (phospho Ser198) Antibody (A95399)

### Specifications:

Name:	Anti-CDC25C (phospho Ser198) Antibody
Description:	Rabbit polyclonal antibody to CDC25C (phospho Ser198).
Specificity:	This antibody detects endogenous levels of CDC25C only when phosphorylated at Ser198.
Applications:	IHC, ELISA
Recommended Dilutions:	WB: 1:500-1:1000, IHC: 1:50-1:100, ELISA: 1:10000
Reactivity:	Human
Immunogen:	Synthetic peptide derived from human CDC25C around the phosphorylation site of Ser198 (amino acids 164-213).
Host:	Rabbit
Clonality:	Polyclonal
Isotype:	IgG
Conjugate:	Unconjugated
Purification:	Purified from rabbit serum by antigen affinity chromatography using the immunizing phospho peptide.
Molecular Weight:	53kDa
Product Form:	Liquid
Formulation:	Supplied in Phosphate Buffered Saline (without Mg <sup>2+</sup> and Ca <sup>2+</sup> ), pH 7.4, with 150mM NaCl, 0.02% Sodium Azide, and 50% Glycerol.
Storage:	Shipped at 4°C. Upon delivery aliquot and store at -20°C. Avoid freeze / thaw cycles.
Disclaimer:	This product is for research use only. It is not intended for diagnostic or therapeutic use.

### Images:



Immunohistochemical analysis of paraffin-embedded human colon carcinoma using Anti-CDC25C (phospho Ser198) Antibody. The right hand panel represents a negative control, where the antibody was pre-incubated with the immunising peptide.