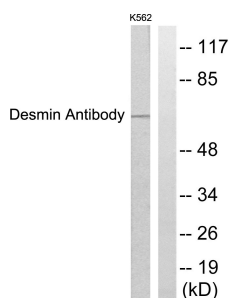


## Anti-Desmin Antibody (A95627)

### Specifications:

Name:	Anti-Desmin Antibody
Description:	Rabbit polyclonal antibody to Desmin.
Applications:	WB, IHC, ELISA
Recommended Dilutions:	WB: 1:500-1:1000, IHC: 1:50-1:100, ELISA: 1:10000
Reactivity:	Human, Mouse, Rat
Immunogen:	Synthetic peptide derived from human Desmin (amino acids 421-470).
Host:	Rabbit
Clonality:	Polyclonal
Isotype:	IgG
Conjugate:	Unconjugated
Purification:	Purified from rabbit serum by antigen affinity chromatography using the immunizing peptide.
Molecular Weight:	53kDa
Product Form:	Liquid
Formulation:	Supplied in Phosphate Buffered Saline (without Mg <sup>2+</sup> and Ca <sup>2+</sup> ), pH 7.4, with 150mM NaCl, 0.02% Sodium Azide, and 50% Glycerol.
Storage:	Shipped at 4°C. Upon delivery aliquot and store at -20°C. Avoid freeze / thaw cycles.
Disclaimer:	This product is for research use only. It is not intended for diagnostic or therapeutic use.

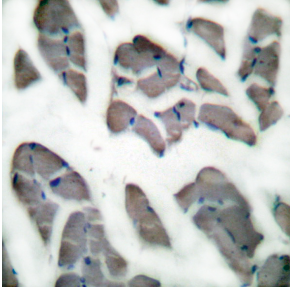
### Images:



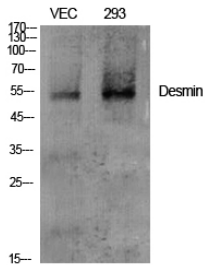
Western blot analysis of lysates from K562 cells using Anti-Desmin Antibody. The right hand lane represents a negative control, where the antibody is blocked by the immunising peptide.

## Anti-Desmin Antibody (A95627)

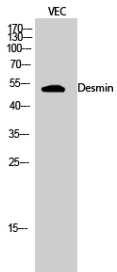
Images continued:



Immunohistochemical analysis of paraffin-embedded human skeletal muscle tissue using Anti-Desmin Antibody. The right hand panel represents a negative control, where the antibody was pre-incubated with the immunising peptide.



Western blot analysis of various cells using Anti-Desmin Antibody.



Western blot analysis of VEC cells using Anti-Desmin Antibody.