

## Anti-PTEN (phospho Ser380 + Thr382 + Thr383) Antibody (A95649)

### Specifications:

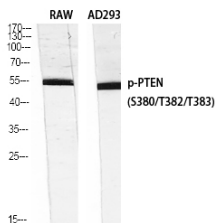
Name:	Anti-PTEN (phospho Ser380 + Thr382 + Thr383) Antibody
Description:	Rabbit polyclonal antibody to PTEN (phospho Ser380 + Thr382 + Thr383).
Specificity:	This antibody detects endogenous levels of PTEN only when phosphorylated at Ser380/Thr382/Thr383.
Applications:	WB, IHC, ELISA
Recommended Dilutions:	WB: 1:500-1:1000, IF: 1:100-1:500, ELISA: 1:20000
Reactivity:	Human, Mouse, Rat
Immunogen:	Synthetic peptide derived from human PTEN around the phosphorylation site of Ser380/Thr382/Thr383. (amino acids 370-400).
Host:	Rabbit
Clonality:	Polyclonal
Isotype:	IgG
Conjugate:	Unconjugated
Purification:	Purified from rabbit serum by antigen affinity chromatography using the immunizing phospho peptide.
Molecular Weight:	47kDa
Product Form:	Liquid
Formulation:	Supplied in Phosphate Buffered Saline (without Mg <sup>2+</sup> and Ca <sup>2+</sup> ), pH 7.4, with 150mM NaCl, 0.02% Sodium Azide, and 50% Glycerol.
Storage:	Shipped at 4°C. Upon delivery aliquot and store at -20°C. Avoid freeze / thaw cycles.
Disclaimer:	This product is for research use only. It is not intended for diagnostic or therapeutic use.

## Anti-PTEN (phospho Ser380 + Thr382 + Thr383) Antibody (A95649)

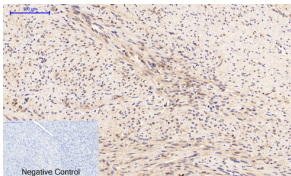
### Images:



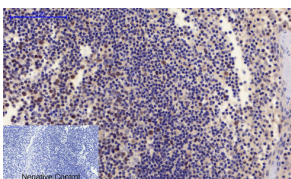
Western blot analysis of lysates from HT29 cells treated with Calyculin A using Anti-PTEN (phospho Ser380 + Thr382 + Thr383) Antibody. The right hand lane represents a negative control, where the antibody is blocked by the immunising peptide.



Western blot analysis of RAW AD293 using Anti-PTEN (phospho Ser380 + Thr382 + Thr383) Antibody.



Immunohistochemical analysis of paraffin-embedded human uterus cancer tissue using Anti-PTEN (phospho Ser380 + Thr382 + Thr383) Antibody at 1:200 (4°C overnight). Negative control was secondary antibody only.



Immunohistochemical analysis of paraffin-embedded human Tonsil tissue using Anti-PTEN (phospho Ser380 + Thr382 + Thr383) Antibody at 1:200 (4°C overnight). Negative control was secondary antibody only.