

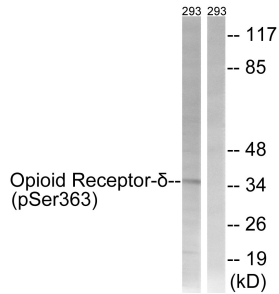
Anti-Opioid Receptor-delta (phospho Ser363) Antibody (A95947)

Specifications:

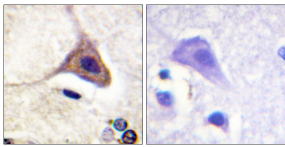
Name:	Anti-Opioid Receptor-delta (phospho Ser363) Antibody
Description:	Rabbit polyclonal antibody to Opioid Receptor-delta (phospho Ser363).
Specificity:	This antibody detects endogenous levels of Opioid Receptor-delta only when phosphorylated at Ser363.
Applications:	WB, IHC, ELISA
Recommended Dilutions:	WB: 1:500-1:1000, IHC: 1:50-1:100, IF: 1:100-1:500, ELISA: 1:5000
Reactivity:	Human, Mouse, Rat
Immunogen:	Synthetic peptide derived from human Opioid Receptor-delta around the phosphorylation site of Ser363 (amino acids 323-372).
Host:	Rabbit
Clonality:	Polyclonal
Isotype:	IgG
Conjugate:	Unconjugated
Purification:	Purified from rabbit serum by antigen affinity chromatography using the immunizing phospho peptide.
Molecular Weight:	40kDa
Product Form:	Liquid
Formulation:	Supplied in Phosphate Buffered Saline (without Mg ²⁺ and Ca ²⁺), pH 7.4, with 150mM NaCl, 0.02% Sodium Azide, and 50% Glycerol.
Storage:	Shipped at 4°C. Upon delivery aliquot and store at -20°C. Avoid freeze / thaw cycles.
Disclaimer:	This product is for research use only. It is not intended for diagnostic or therapeutic use.

Anti-Opioid Receptor-delta (phospho Ser363) Antibody (A95947)

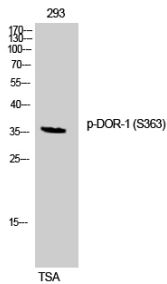
Images:



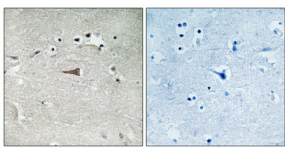
Western blot analysis of lysates from 293 cells treated with TSA 400nM 24h using Anti-Opioid Receptor-delta (phospho Ser363) Antibody. The right hand lane represents a negative control, where the antibody is blocked by the immunising peptide.



Immunohistochemical analysis of paraffin-embedded human brain using Anti-Opioid Receptor-delta (phospho Ser363) Antibody. The right hand panel represents a negative control, where the antibody was pre-incubated with the immunising peptide.



Western blot analysis of 293 cells using Anti-Opioid Receptor-delta (phospho Ser363) Antibody.



Immunohistochemical analysis of paraffin-embedded human brain using Anti-Opioid Receptor-delta (phospho Ser363) Antibody 1:100 (4°C overnight). The right hand panel represents a negative control, where the antibody was pre-incubated with the immunising peptide.