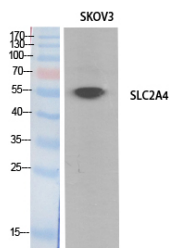


## Anti-SLC2A4 Antibody (A96739)

### Specifications:

|                        |  |
|------------------------|--|
| Name:                  | Anti-SLC2A4 Antibody   |
| Description:           | Rabbit polyclonal antibody to SLC2A4.  |
| Applications:          | WB, ELISA  |
| Recommended Dilutions: | WB: 1:500-1:1000, ELISA: 1:10000   |
| Reactivity:            | Human, Mouse, Rat  |
| Immunogen:             | Synthetic peptide derived from the N-terminal region of human SLC2A4 (amino acids 21-70).  |
| Host:                  | Rabbit   |
| Clonality:             | Polyclonal   |
| Isotype:               | IgG  |
| Conjugate:             | Unconjugated   |
| Purification:          | The antibody was affinity-purified from rabbit antiserum by affinity-chromatography using epitope-specific peptide.                                    |
| Molecular Weight:      | 56kDa  |
| Product Form:          | Liquid   |
| Formulation:           | Supplied in Phosphate Buffered Saline (without Mg <sup>2+</sup> and Ca <sup>2+</sup> ), pH 7.4, with 150mM NaCl, 0.02% Sodium Azide, and 50% Glycerol. |
| Storage:               | Shipped at 4°C. Upon delivery aliquot and store at -20°C. Avoid freeze / thaw cycles.  |
| Disclaimer:            | This product is for research use only. It is not intended for diagnostic or therapeutic use.   |

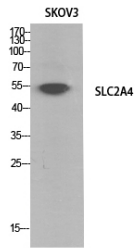
### Images:



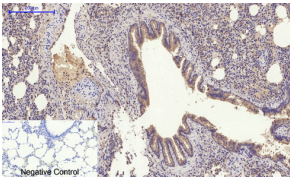
Western blot analysis of extracts from SKOV3 cells using Anti-SLC2A4 Antibody.

## Anti-SLC2A4 Antibody (A96739)

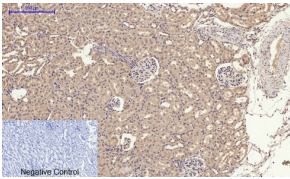
Images continued:



Western blot analysis of SKOV3 cells using Anti-SLC2A4 Antibody.



Immunohistochemical analysis of paraffin-embedded rat lung tissue using Anti-SLC2A4 Antibody at 1:200 (4°C overnight). Negative control was secondary antibody only.



Immunohistochemical analysis of paraffin-embedded rat kidney tissue using Anti-SLC2A4 Antibody at 1:200 (4°C overnight). Negative control was secondary antibody only.