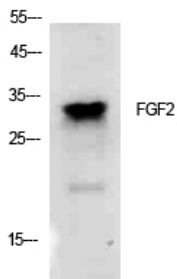


Anti-FGF2 Antibody (A98157)

Specifications:

| | |
|------------------------|--------------------------------------------------------------------------------------------------------------------------------------------------------|
| Name: | Anti-FGF2 Antibody |
| Description: | Rabbit polyclonal antibody to FGF2. |
| Applications: | WB, ELISA |
| Recommended Dilutions: | WB: 1:500-1:1000, ELISA: 1:10000 |
| Reactivity: | Human, Mouse, Rat |
| Immunogen: | Synthetic peptide derived from the Internal region of human FGF2 (amino acids 151-200). |
| Host: | Rabbit |
| Clonality: | Polyclonal |
| Isotype: | IgG |
| Conjugate: | Unconjugated |
| Purification: | The antibody was affinity-purified from rabbit antiserum by affinity-chromatography using epitope-specific peptide. |
| Molecular Weight: | 30kDa |
| Product Form: | Liquid |
| Formulation: | Supplied in Phosphate Buffered Saline (without Mg ²⁺ and Ca ²⁺), pH 7.4, with 150mM NaCl, 0.02% Sodium Azide, and 50% Glycerol. |
| Storage: | Shipped at 4°C. Upon delivery aliquot and store at -20°C. Avoid freeze / thaw cycles. |
| Disclaimer: | This product is for research use only. It is not intended for diagnostic or therapeutic use. |

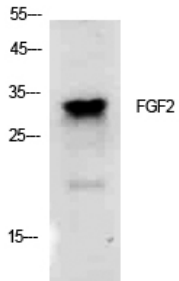
Images:



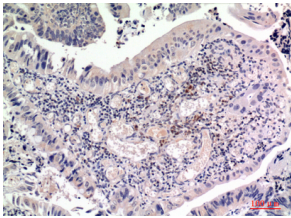
Western blot analysis of extracts from K562 cells using Anti-FGF2 Antibody.

Anti-FGF2 Antibody (A98157)

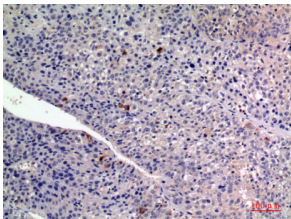
Images continued:



Western blot analysis of K562 cells using Anti-FGF2 Antibody.



Immunohistochemical analysis of paraffin-embedded human colon cancer using Anti-FGF2 Antibody.



Immunohistochemical analysis of paraffin-embedded human liver cancer using Anti-FGF2 Antibody.