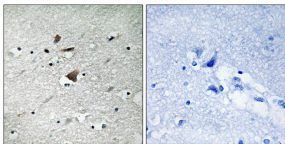


Anti-APC1 Antibody (A99227)

Specifications:

| | |
|------------------------|--|
| Name: | Anti-APC1 Antibody |
| Description: | Rabbit polyclonal antibody to APC1. |
| Applications: | IHC, ELISA |
| Recommended Dilutions: | IHC: 1:50-1:100, ELISA: 1:40000 |
| Reactivity: | Human, Mouse |
| Immunogen: | Synthetic peptide derived from human APC1 (amino acids 321-370). |
| Host: | Rabbit |
| Clonality: | Polyclonal |
| Isotype: | IgG |
| Conjugate: | Unconjugated |
| Purification: | Purified from rabbit serum by antigen affinity chromatography using the immunizing peptide. |
| Molecular Weight: | 216kDa |
| Product Form: | Liquid |
| Formulation: | Supplied in Phosphate Buffered Saline (without Mg ²⁺ and Ca ²⁺), pH 7.4, with 150mM NaCl, 0.02% Sodium Azide, and 50% Glycerol. |
| Storage: | Shipped at 4°C. Upon delivery aliquot and store at -20°C. Avoid freeze / thaw cycles. |
| Disclaimer: | This product is for research use only. It is not intended for diagnostic or therapeutic use. |

Images:



Immunohistochemical analysis of paraffin-embedded human brain tissue using Anti-APC1 Antibody. The right hand panel represents a negative control, where the antibody was pre-incubated with the immunising peptide.