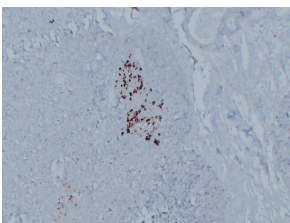


## Anti-Glucagon Antibody [ABT-GCG] (A99249)

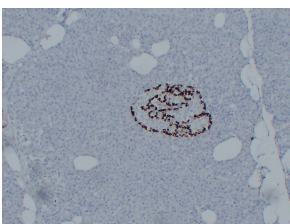
### Specifications:

Name:	Anti-Glucagon Antibody [ABT-GCG]
Description:	Mouse monoclonal (ABT-GCG) antibody to Glucagon.
Applications:	IHC
Reactivity:	Human
Immunogen:	Synthetic peptide derived from human Glucagon.
Host:	Mouse
Clonality:	Monoclonal
Clone ID:	ABT-GCG
Isotype:	IgG
Conjugate:	Unconjugated
Purification:	Immunogen affinity purified.
Product Form:	Liquid
Formulation:	Supplied in Tris Buffered Saline with 0.5% Bovine Serum Albumin and 0.1% Kathon CG/ICP.
Disclaimer:	This product is for research use only. It is not intended for diagnostic or therapeutic use.

### Images:



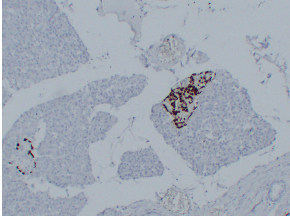
Immunohistochemical analysis of paraffin-embedded human Pancreas using Anti-Glucagon Antibody.



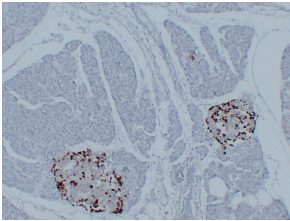
Immunohistochemical analysis of paraffin-embedded human Pancreas using Anti-Glucagon Antibody.

## Anti-Glucagon Antibody [ABT-GCG] (A99249)

Images continued:



Immunohistochemical analysis of paraffin-embedded human Pancreas using Anti-Glucagon Antibody.



Immunohistochemical analysis of paraffin-embedded human Pancreas using Anti-Glucagon Antibody.