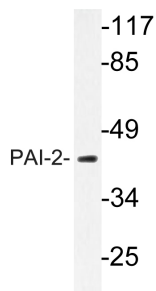


## Anti-PAI-2 Antibody (A99613)

### Specifications:

Name:	Anti-PAI-2 Antibody
Description:	Rabbit polyclonal antibody to PAI-2.
Applications:	WB, IHC, ELISA
Recommended Dilutions:	WB: 1:500-1:1000, IHC: 1:50-1:100, ELISA: 1:10000
Reactivity:	Human
Immunogen:	Synthetic peptide derived from human PAI-2 (amino acids 258-307).
Host:	Rabbit
Clonality:	Polyclonal
Isotype:	IgG
Conjugate:	Unconjugated
Purification:	Purified from rabbit serum by antigen affinity chromatography using the immunizing peptide.
Molecular Weight:	46kDa
Product Form:	Liquid
Formulation:	Supplied in Phosphate Buffered Saline (without Mg <sup>2+</sup> and Ca <sup>2+</sup> ), pH 7.4, with 150mM NaCl, 0.02% Sodium Azide, and 50% Glycerol.
Storage:	Shipped at 4°C. Upon delivery aliquot and store at -20°C. Avoid freeze / thaw cycles.
Disclaimer:	This product is for research use only. It is not intended for diagnostic or therapeutic use.

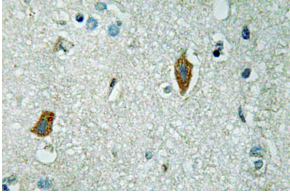
### Images:



Western blot analysis of lysate from MCF 7 cells using Anti-PAI-2 Antibody.

## Anti-PAI-2 Antibody (A99613)

Images continued:



Immunohistochemical analysis of paraffin-embedded human brain tissue using Anti-PAI-2 Antibody.